

PA Traffic Injury Prevention Project
 PA Chapter, American Academy of Pediatrics
 Rose Tree Corporate Center II
 1400 N. Providence Road, Suite 4000
 Media, PA 19063
 Phone: 484-446-3008
 1-800-CAR BELT (in PA only)
 Email: aosterhuber@paaap.org
 Website: www.pakidtravelsafe.org

Special points of interest:

- NHTSA Improves Child Safety Seat Testing Standards with Final Rule on Side Impact Protection
- Safe Sleep for Babies Act of 2021 and AAP Policy Statement Sleep Related Infant Deaths
- Additional Padding, Inserts, and Crotch Rolls in Rear-Facing Car Seats
- Upcoming Trainings

NHTSA Improves Child Safety Seat Testing Standards with Final Rule on Side Impact Protection

The U.S. Department of Transportation's National Highway Traffic Safety Administration (NHTSA) issued a final rule that updates testing requirements for child safety seats to improve the protection of children during side-impact crashes. The rule is a major advance in protecting children from serious injury in traffic crashes.

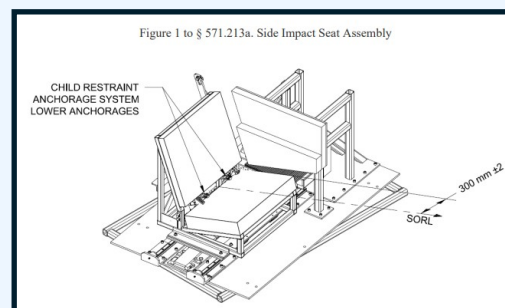
Dr. Steven Cliff, NHTSA Administrator, stated that "Side-impact collisions cause serious injuries and deaths in young children each year. By establishing more comprehensive testing requirements, we are advancing child passenger safety and assuring parents that the safety seat they choose for their child must meet the highest safety standards."

The final rule amends Federal Motor Vehicle Safety Standard No. 213, "Child restraint systems," by adding side impact performance requirements for child safety seats. The current standard requires child seats to meet performance criteria in a test simulating a 30-mph frontal impact. This final rule establishes a side impact test that replicates a 30-mph side collision, commonly known as a T-bone crash.

The test relies on a sliding vehicle seat mounted on rails, known as a sled, and a vehicle door mounted on the sled to resemble the vehicle and simulates what happens to a child and child seat in a T-bone crash. Child seats will be evaluated using the CRABI 12-month-old child test dummy and the Q3s - 3 year old side impact test dummy.

The effective date of this requirement is 30 days after the date of publication in the Federal Register. Compliance is required 3 years from the publication date. Early compliance is permitted.

For the full report: <https://www.nhtsa.gov/sites/nhtsa.gov/files/2022-06/Final-rule-FMVSS-213a-side-impact-child-restraint-systems-web.pdf>.



Safe Sleep for Babies Act of 2021 and AAP Policy Statement Sleep Related Infant Deaths: Updated 2022 Recommendations for Reducing Infant Deaths in Sleep Environment (published online June 21, 2022)

Legislation passed by the Federal Government and the updated AAP Policy Statement address inclined sleeping devices that place an infant on a sleeping surface that is angled. These devices have been linked to an increase risk of suffocation and airway obstruction. Parents and caregivers may have heard about the legislation and/or the Updated AAP Policy and may have concerns about their child's rear-facing car seat. Infants and children do fall asleep in their car seats, but car seats are not considered an inclined sleeper and they are essential for the safe travel of children. When educating parents and caregivers, reassure them that a sleeping child is safe in a properly installed car seat during travel. Encourage parents and caregivers to follow the car seat manufacturer's instructions that state children should be removed from the car seat once arriving at their destination. Information on the "Safe Sleep for Babies Act and the "Sleep Related Infant Deaths: Updated 2022 Recommendations for Reducing Infant Deaths in Sleep Environment" is provided below. To read the documents, follow the links provided.

Public Law 117-126 / 117th Congress- Approved 5/16/2022 - <https://www.congress.gov/117/plaws/publ126/PLAW-117publ126.pdf>

Banning of Inclined Sleepers for Infants:

- Takes effect not later than 180 days after date of enactment.
- Inclined sleeper for infants means a product with an inclined slope of greater than 10° designed to provide sleeping accommodations for an infant up to one year old.

AAP Policy Statement - <https://publications.aap.org/pediatrics/article/doi/10.1542/peds.2022-057990/188304/Sleep-Related-Infant-Deaths-Updated-2022>

The American Academy of Pediatrics recommends a safe sleep environment to reduce the risk of all sleep-related deaths. This includes supine positioning and the use of a firm, non-inclined sleep surface.

- Sitting devices, such as car seats, strollers, swings, infant carriers, and infant slings, are not recommended for routine sleep in the hospital or at home, particularly for infants aged <4 months.
- When infants fall asleep in a sitting device, remove them from the product and move them to a crib or other appropriate flat surface as soon as is safe and practical. Car seats and similar products are not stable on a crib mattress or other elevated surfaces.
- Do not leave infants unattended in car seats and similar products, and do not place or leave infants in car seats and similar products with the straps unbuckled or partially buckled.

Additional Padding, Inserts, and Crotch Rolls in Rear-Facing Car Seats

Car seat weight ranges vary to accommodate children of varying size. Harnesses can be adjusted to the child's shoulder height, and many car seats have crotch straps that can be adjusted close to the child's body. Most car seats also come with padding or inserts to improve the positioning, fit, and comfort of the child. Padding or inserts that come with the car seat are used to position the child and to improve harness fit. Always read and follow the car seat manufacturer's instructions. The instructions provide guidance on placing the padding or insert in the car seat. Some accessories will have a weight range for when the insert can be used, others require removal based on harness fit. When used correctly, these inserts are safe to use. Car seat manufacturers may also have approved inserts that can be added to specific car seats.

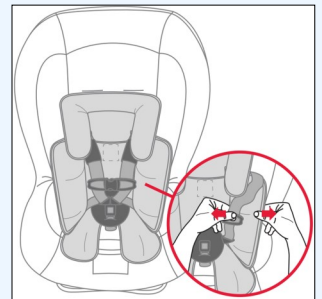
Accessories that did not come with the car seat or were not approved by the car seat manufacturer are considered "non-approved" products and should not be used. Car seats meet the crash performance standards specified in Federal Motor Vehicle Safety Standard 213. Adding these non-approved products may change how a car seat performs and protects a child during a crash. Using products that make even minor child fit adjustments could change how the car seat will perform in a crash, increasing the potential for serious injury or death. For example:

- **Head Support Cushions:** A head insert that is not approved by the car seat manufacturer may not fit correctly in the car seat and may not line up with the harness slots. Routing the harness system to accommodate the non-regulated head insert may introduce slack into the harness system, increasing the likelihood of ejection from the car seat in the event of a crash.
- **Additional Padding:** Padding that is placed behind the child or on the harness can introduce slack in the harness. Non-approved padding or inserts placed under the child or around the harness can compress in a crash and create slack in the harness.



BRITAX Head & Body Support Pillow

- Offers full body and contoured head support.
- It has been crash tested and approved for use with all BRITAX infant and convertible car seats and is intended for use with children up to 22 pounds.
- The head support is adjustable and can be detached for car seats with head restraints or when it's no longer needed.



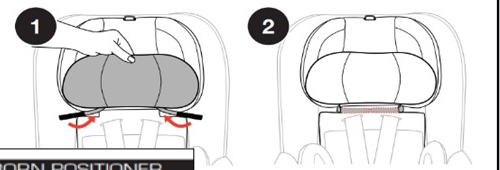
CHICCO Fit2® Infant & Toddler Car Seat Head and Body Insert

- Designed to help ensure a better fit for infants who weigh between 4 and 11 pounds.
- The head insert can be used with or without the body insert.
- Compatible with the specific Fit2® models manufactured before 2020 only.
- For questions or help with assembly, refer to the car seat instruction manual or contact customer service.

HEAD REST INSERT

To provide head support for smaller infants, the Head Rest Insert may be used. The Head Rest Insert can be used with or without the Newborn Positioner.

- 1 To Install Head Rest Insert, hold the Insert in place. Wrap the straps around the back of the Head Rest fabric.
- 2 Attach both straps to the back of the Head Rest fabric using the hook and loop tabs.

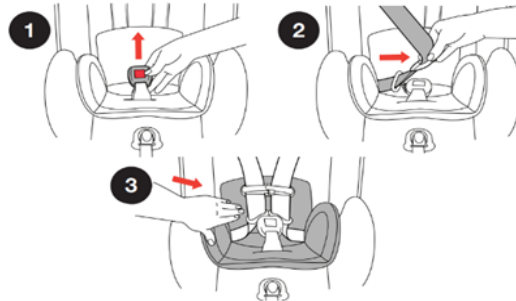


NEWBORN POSITIONER

⚠ WARNING - Use the NEWBORN POSITIONER provided for infants who weigh between 4 and 11 lbs (1.8 and 5 kg).

To ensure a better fit for smaller infants, the Newborn Positioner may be needed. Do NOT use any other newborn positioner or pillows. Only use the one provided by Chicco for this Child Restraint.

- 1 Place the Newborn Positioner in the Carrier seat. Then pull the Buckle through slot in the bottom of Newborn Positioner.
- 2 Pull both Harness Straps over the side panels of Newborn Positioner.
- 3 Push Newborn Positioner firmly into Carrier to make sure it is properly positioned against the back of the seating area.



Boppy® Reversible Head and Neck Support

- Works with 3 and 5 point harness systems.
- Head support should only be used in the recline position for infants.
- Support is for awake-time usage in strollers, bouncers and swings;
- Not for car seats.



Additional Padding, Inserts, and Crotch Rolls in Rear-Facing Car Seats

Steps to take when a child needs additional support when correctly secured in their car seat?

Car seat manufacturers may permit a tightly rolled receiving blanket on each side of the child for lateral support, if needed, once the harness is correctly adjusted and snug following the car seat manufacturer's instructions. The rolled receiving blankets should not be placed between the child and the harness.

When the harness is correctly adjusted and the child slides forward, car seat manufacturers may permit the use of a crotch roll to fill in the gap between the child and the crotch strap to prevent the child from sliding forward and out of position.

To determine if you can add either side padding or crotch rolls for a child in a rear-facing seat:



Check the car seat instructions for information about positioning the infant in the car seat and if the use of a crotch roll or extra padding that did not come with the car seat is permitted.



If information is not in the car seat instructions, go to the car seat manufacturer's website. Check the car seat Frequently Asked Questions (FAQs) to see if guidance is given for using padding and crotch rolls.



Still unclear? Call the car seat manufacturer's customer service helpline and ask directly. Be sure to have the car seat model number and manufacture date when you call.

Four Steps to Correctly Place a Child in a Car Seat

1. Place the **child all the way back** in the car seat. The child's back and bottom should be in contact with the back and bottom of the car seat.
2. Place the harness straps in the **correct harness slots for the child**.
 - **Rear-Facing:** The harness is placed **AT or BELOW** the child's shoulders.
 - **Forward-Facing:** The harness is placed **AT or ABOVE** the child's shoulders.
3. Tighten the **harness straps snugly**.
 - "A snug strap should NOT allow any slack. It lies in a relatively straight line without sagging. It does not press on the child's flesh or push the child's body into an unnatural position."
4. Place the **harness retainer clip at armpit level**.

When a Crotch Roll Is Needed

Place the child in the car seat. Follow the car seat manufacturer's instructions to adjust the harness to fit securely on the child. If the child slides forward, check the car seat instructions for guidance on moving the crotch buckle closer to the child's body. If the harness is adjusted correctly, but the child still slides forward and out of position, determine if adding a crotch roll is an acceptable solution. If the information is not in the car seat instructions, you may need to search the manufacturer website or make a call to customer service.

Adding a Crotch Roll to Position a Child

Place the child in the car seat and correctly adjust and secure the harness. Unbuckle the harness and place a rolled wash cloth or fabric between the child and the crotch strap, wrapping it around the back of the crotch strap into a horseshoe shape. Buckle the harness. The crotch roll should just fill in the gap between the child and the crotch strap and not interfere with the child's leg position or the crotch strap. Remove the crotch roll when the crotch strap is close to the child and the child no longer slides forward and out of position.



Some Car Seat Manufacturers Say "No" to the Use of a Crotch Roll

When the car seat manufacturer has determined that adjustments to the crotch strap and/or the padding should properly fit any occupant within the allowed size range. When the harness is adjusted correctly, infants should not slide forward and out of position. BRITAX and Chicco are two examples of car seat manufacturers with this policy. If the child continues to slide forward and out of position, determine if additional harness adjustments can be made, or contact the car seat manufacturer for their suggested adjustments to improve the fit.

Some Car Seat Manufacturers Allow the Use of a Crotch Roll

When the car seat manufacturer has determined that some children may need additional adjustment or padding to ensure the child does not slide forward and out of position when the harness has been adjusted. Allowing the use of a crotch roll provides an additional option to caregivers to get a better harness fit for the child. A car seat manufacturer may specify use of a crotch roll, if needed, in the car seat instructions or on their website as an FAQ. For instance, Graco stated online:

"While we prefer consumers use the supplied infant head and body support in accordance with the owner's manual, the National Child Passenger Safety Certification Training Program recommends the use of a small rolled wash cloth between the child and the harness buckle if additional support is needed. Graco permits this practice if the supplied infant body support is unavailable or if additional support is still required when in use."

Remember: A crotch roll is not intended to lift a child up, so it is not placed under the child. The crotch roll sits in front of the child to fill any gap between the child and the crotch strap, preventing the child's back from sliding forward, away from the back of the car seat.

Child Passenger Safety Trainings

The **CPS Certification** course provides the training necessary to become a certified CPS technician. This four-day course establishes CPS certification for a two-year cycle. The fee is \$95.
To register, go to cert.safekids.org.

The **CPS Renewal** course is for CPS technicians with an expired certification. The one-day course allows recertification for a two-year cycle.
The fee is \$95.
To register, go to cert.safekids.org.

The **TIPP CPS Technical Update** class has been pre-approved for 6 CEUs towards recertification.
Please contact TIPP if you are interested in hosting an Update class for CPS technicians in your area.

For questions on how to create a personal profile or register for a class, please go to <https://cert.safekids.org/resources-faqs/how-to>.

Certification Courses

Berks County*

Course ID: PA2022010114
Date: August 8 - 11, 2022
Time: 8:00 am - 5:00 pm
AAA Reading Berks
920 Van Reed Road
Lower Level Meeting Room
Wyomissing, PA 19610
Contact: Sue Ernst/Cheryl Gouker
Phone: 610-374-4531 Ext. 7117
Email: cgouker@aaardgberks.com
*Closed class, please email for info

Mercer County*

Course ID: PA20220421442
Date: August 16 - 19, 2022
Time: 9:00 am - 5:00 pm
Superior Ambulance Service
921 E. Main Street Ext.
Grove City, PA 16127
Contact: Mary Lakari
Phone: 814-838-9971
Email: mlakari@paaap.org
*Closed class, please email for info



Bucks County

Course ID: PA20220517509
Date: September 26 - 29, 2022
Time: 8:30 am - 4:30 pm
Yardley Makefield Fire Company
652 Stony Hill Road
Yardley, PA 19067
Contact: Teresa Rychlak
Phone: 484-446-3078
Email: trychlak@paaap.org

Lackawanna County

Course ID: PA20220614580
Date: October 4 - 6, 2022
Time: 8:00 am - 6:00 pm
Commonwealth Health EMS
1 Oakwood Drive (Corner of Keyser Avenue)
Scranton, PA 18642
Contact: Cathy Connors
Phone: 570-471-3026
Email: cconnors@paaap.org

Centre County*

Course ID: PA20220617594
Date: October 4 - 6, 2022
Time: 8:30 am - 5:00 pm
Spring Township Police Dept
1309 Blanchard Street
Bellefonte, PA 16823
Contact: Kelly Whitaker
Phone: 814-943-3360
Email: kwhitaker@paaap.org
*Closed class, please email for info

Montgomery County

Course ID: PA20220621603
Date: October 11 - 14, 2022
Time: 8:30 am - 4:30 pm
Volunteer Medical Service Corps of Lansdale
175 Medical Campus Drive
Lansdale, PA 19446
Contact: Teresa Rychlak
Phone: 484-446-3078
Email: trychlak@paaap.org

Erie County

Course ID: 20220624617
Date: Oct. 11-14th
Time: 9:00 a.m. - 5:00 p.m.
Perry Hi-Way Hose Company
Training rm.
8281 Oliver Road
Erie, PA 16509
Contact: Mary LaKari
Phone: 814-838-9971
Email: mlakari@paaap.org

Luzerne County

Course ID: PA20220614581
Date: November 2 - 4, 2022
Time: 8:00 am - 6:00 pm
Southside Fire Station
525 E Broad Street
Hazleton, PA 18642
Contact: Cathy Connors
Phone: 570-471-3026
Email: cconnors@paaap.org

Renewal Courses

Berks County

Course ID: PA2022010113
Date: July 11, 2022
Time: 9:00 am - 5:00 pm
AAA Reading - Berks
Lower Level Meeting Room
Wyomissing, PA 19610
Contact: Sue Ernst/Cheryl Gouker
Phone: 610-374-4531 Ext. 7117
Email: cgouker@aaardgberks.com

Mercer County

Date: Thursday October 6
Time: 9:00 a.m. - 5:00 p.m.
Location to be determined
Mercer, PA 16137
Contact: Mary Lakari
Phone: 814-838-9971
Email: mlakari@paaap.org

Warren County

Fall 2022
Location and time to be determined
Contact: Mary Lakari
Phone: 814-838-9971
Email: mlakari@paaap.org

Blair County*

Course ID: PA20220622605
Date: October 11, 2022
Time: 9:00 am - 4:30 pm
PSP Troop G
North Juniata Street
Hollidaysburg, PA 16648
Contact: Kelly Whitaker
Phone: 814-943-3360
Email: kwhitaker@paaap.org
*Closed class, please email for info

Luzerne County

Course ID: PA20220617593
Date: October 13, 2022
Time: 9:00 am - 5:00 pm
EMS of Northeast PA
169 Centerpoint Blvd.
Jenkins Township, PA 18640
Contact: Cathy Connors
Phone: 570-471-3026
Email: cconnors@paaap.org

Bedford County*

Course ID: PA2022067595
Date: October 13, 2022
Time: 9:00 am - 4:30 pm
Cumberland Valley Fire Dept.
4344 Bedford Valley Road
Bedford, PA 15522
Contact: Kelly Whitaker
Phone: 814-943-3360
Email: kwhitaker@paaap.org
*Closed class, please email for info



PA TIPP Child Passenger Safety Technical Update Classes: Please RSVP if Planning to Attend

Please contact TIPP if you are interested in hosting a CPS Technical Update class for CPS technicians in your area.

- CPS Technical Update is pre-approved for 6 CPS CEUs. Contact your TIPP regional coordinator to schedule a presentation in your region and earn 6 CPS CEUs toward recertification.
- PA TIPP instructors are approved as Emergency Medical Services Continuing Education Providers. EMTs can receive 6 EMS continuing education credits for attending the 2019 edition of the PA TIPP technical update class.

Berks County

Date: July 15, 2022
Time: 9:00 am - 3:00 pm
AAA Reading - Berks
920 Van Reed Rd., Reading, PA 19610
Contact: Teresa Rychlak
Phone: 484-446-3078
Email: trychlak@paaap.org

Delaware County

Date: August 16, 2022
Time: 9:00 am - 3:00 pm
Broomall Fire Company
1 N. Malin Road, Broomall, PA 19008
Contact: Teresa Rychlak
Phone: 484-446-3078
Email: trychlak@paaap.org

Monroe County

Date: August 4, 2022
Time: 9:30 am - 3:30 pm
Monroe County Office of Emergency Management
100 Gypsum Road Suite 101
Stroudsburg, PA 18360
Contact: Cathy Connors
Email: cconnors@paaap.org

Bradford County

August/September TBA
Robert Packer Hospital
1 Guthrie Square
Sayre PA 18840
Contact: Cathy Connors
Email: cconnors@paaap.org

Schuylkill County

September 2022 TBA
Rush Twp. Municipal Building
104 Mahanoy Avenue
Tamaqua, PA 18252
Contact: Cathy Connors
Email: cconnors@paaap.org

Centre County

Date: October 7, 2022
Time: 9:00 am - 4:00 pm
State College—location TBD
Contact: Kelly Whitaker
Phone: 814-943-3360
Email: kwhitaker@paaap.org
*Email if interested for details

Erie County

Date: October 7, 2022
Time : 9:00 am – 3:00 pm
Perry Hi-Way Hose Company
Training Room
8281 Oliver Road, Erie, PA 16509
Contact: Mary Lakari
Phone: 814-838-9971
Email: mlakari@paaap.org

Venango County

Date: October 17, 2022
Time: 9:00 am – 3:00 pm
UPMC NW Seneca Place
3163 State Route 257,
Seneca, PA 16346
Contact: Mary Lakari
Phone: 814-838-9971
Email: mlakari@paaap.org

Luzerne County

Date: October 20, 2022
Time: 9:30 am - 3:30 pm
EMS of Northeast PA
169 Centerpoint Blvd
Jenkins Township, PA 18640
Contact: Cathy Connors
Email: cconnors@paaap.org